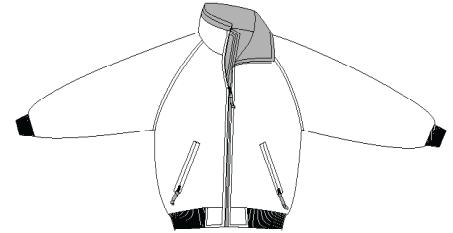
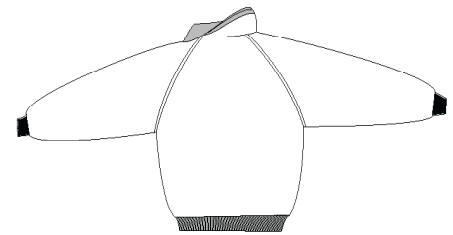


# Safety Challenger Jacket

PORT AUTHORITY®



Front



Back

## J754S

\* Durable 100% polyester \* Teklon® nylon shell is durable and water repellent \* Poly-filled body with heavyweight fleece lining for extra warmth \* Rib knit waistband and cuffs \* Lower slash pockets, interior pocket (all with zip closures) \* Nylon lining in the sleeves \* Port Pocket™ engineering gives easy access for left chest embroidery

### Care Instructions:

Machine wash cold.  
Do not dry clean, do not iron.  
Do not bleach, do not tumble dry.

### Finished Measurements in Inches

Size	XS	S	M	L	XL	2XL	3XL	4XL	5XL	6XL
Length	26	26.5	27	27.5	28.5	29	30	30	32.5	33.5
Chest	45	48	51	54	57	60	63	66	74	77
Sleeve	33	34.5	36	36.5	38	39	39.5	40	42	42.5
Collar Ht	4.25	4.25	4.25	4.25	4.25	4.25	4.25	4.25	4.25	4.25
Areas for Decoration	Left Chest / Right Chest / Full Back						Port Pocket™		NA	

### Colors

	Safety Yellow/True Black
--	--------------------------

### Please Note:

Colors shown are approximate and for reference only. For closest match see PMS colors, or for exact match, returnable samples and grommets are available.

Collar measured center back seam to top hem, Chest width 1" below arm hole, Side pocket from top to bottom of opening, Body length from back neck seam to hem, Sleeve length from center back seam to hem

### Color Chart

<b>Jacket Colors</b>	Safety Yellow
Textile PMS	No Match
General PMS	No Match
<b>Accent Colors</b>	True Black
Textile PMS	No Match
General PMS	663 C